

**INDUCTION RANGES WARMING /COOKING  
ETL APPROVED**



**#803IND**

300W - 5 pcs daisy chain.

Holding Induction Range, countertop or drop-in, 9.5/8" round, electric, single burner, 5 position set hold temperature, temperature range: 145°- 190 ° F, daisy chain upto 5 units, 120v/60/1-ph, 300 watts, 2.5 amps, ETL approved



**#801IND**

600W - 3 pcs daisy chain.

Warming / Holding Induction Range, countertop or drop-in, 9.5/8" round, electric, single burner, 5 position set hold temperature, temperature range: 145°- 190 ° F, daisy chain upto 3 units, 120v/60/1-ph, 600 watts, 5 amps, ETL approved



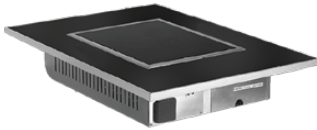
**#806IND**

1800W

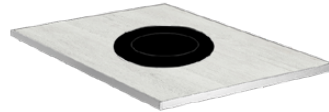
Induction Holding / Cooking Range, 11-13/16"W x 15-1/3"D x 37/16"H overall, drop-in or tabletop, built-in size: 11"W x 14-9/16"D, single burner, sensor touch control, digital display, 2-function: cook or hold mode, power level: 1-10 in "cook" mode, temperature range: 110° - 400° F in "temp mode", LED power/temp display, function: up to 240 minutes, temperature lock feature (hold lock button for 3 seconds), on/off & power indication, 2-hour auto-off (adjustable), over heat/voltage/current protection, glass induction top, 120v/60/1-ph, set at 960W for light cooking 8 amps and set at 1800W for heavier cooking, 15 amps, NEMA 515P, ETL, CE



## INDUCTION RANGE DISPLAY OPTIONS



**SQUARE INDUCTION**  
#ST5917BIND



**SINGLE ROUND INDUCTION**  
#ST59801WIND



**DOUBLE ROUND INDUCTION**  
#ST59802INDG



**OMELETTE STATION**  
#ST59380TG



**QUICK CONNECT STAND**  
#3385



**QUICK CONNECT ADAPTER**  
#802IND



**SLEEK INDUCTION BASE**  
#3341



**UNIVERSAL INDUCTION STAND**  
#3286